

Did you know lung cancer often
doesn't display symptoms until
it's too late?

We're offering free lung health
checks to those at higher risk of
lung cancer to help identify any
problems early. If eligible your
GP will refer you for a lung
health check

Visit

www.southendlunghealthcheck.nhs.uk
for more information on the programme.



We're offering free lung health checks to those aged between 55 and 74 who currently or used to smoke to make sure your lungs are in good working order.

For more information please visit
www.southendlunghealthcheck.nhs.uk

If you are displaying any of the below symptoms please contact your GP as soon as possible.

- A persistent cough or change in your normal cough
- Coughing up blood
- Being short of breath
- Unexplained tiredness or weight loss
- An ache or pain when breathing or coughing
- Appetite loss





Targeted Lung Health Check Programme

We're offering free lung health checks to those at higher risk of lung problems to help identify any issues early

For more information please visit www.southendlunghealthcheck.nhs.uk





Targeted Lung Health Check Programme

For Blackburn with Darwen

If you are:

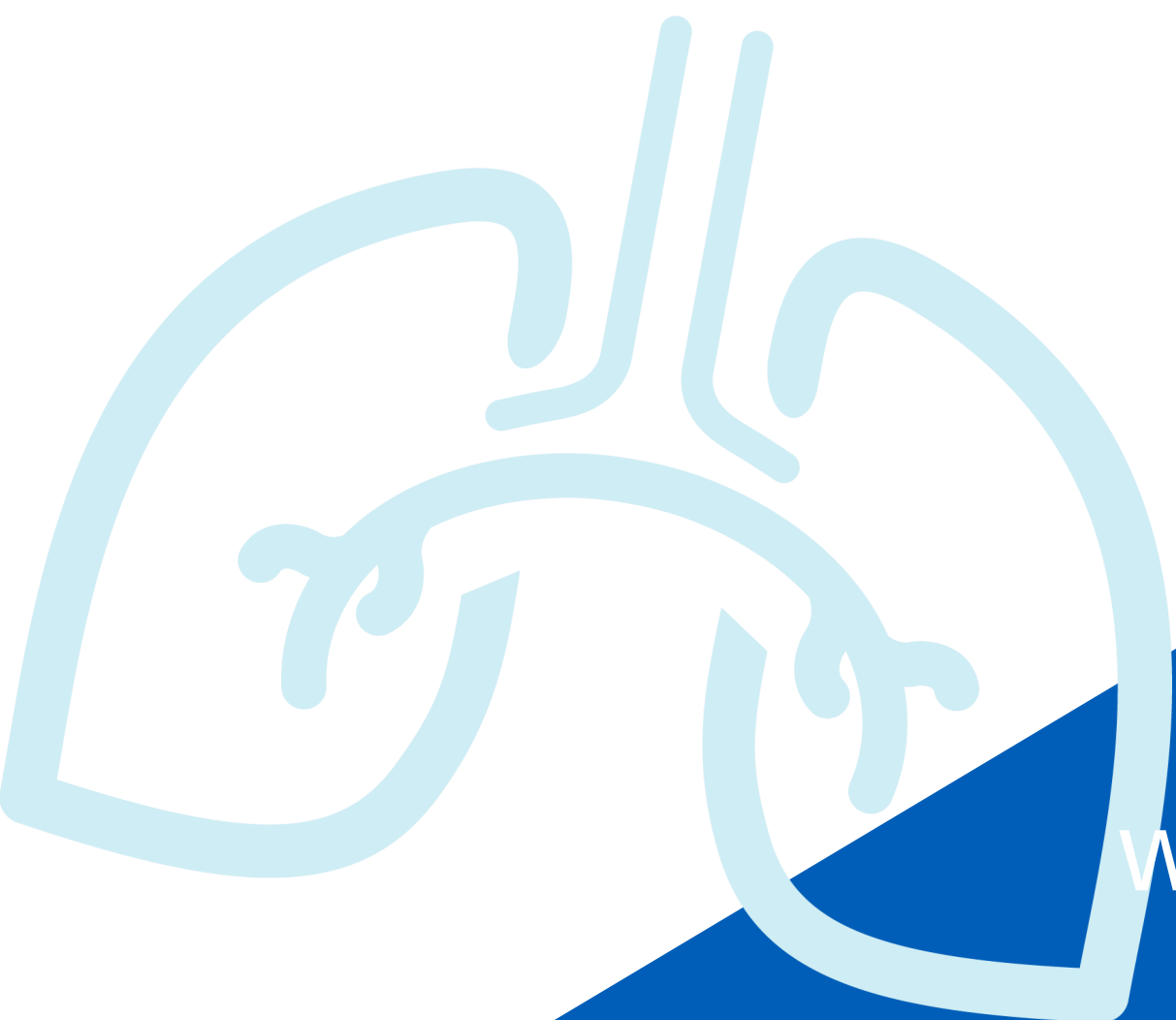
- Between 55 and 74 years old
- Currently smoke or have ever smoked
- Registered with a GP

You may have been or will be contacted by the NHS to discuss a lung health check appointment.

It's important that you attend.

To find out more:

www.southendlunghealthcheck.nhs.uk





Targeted Lung Health Check Programme

For Blackpool

If you are:

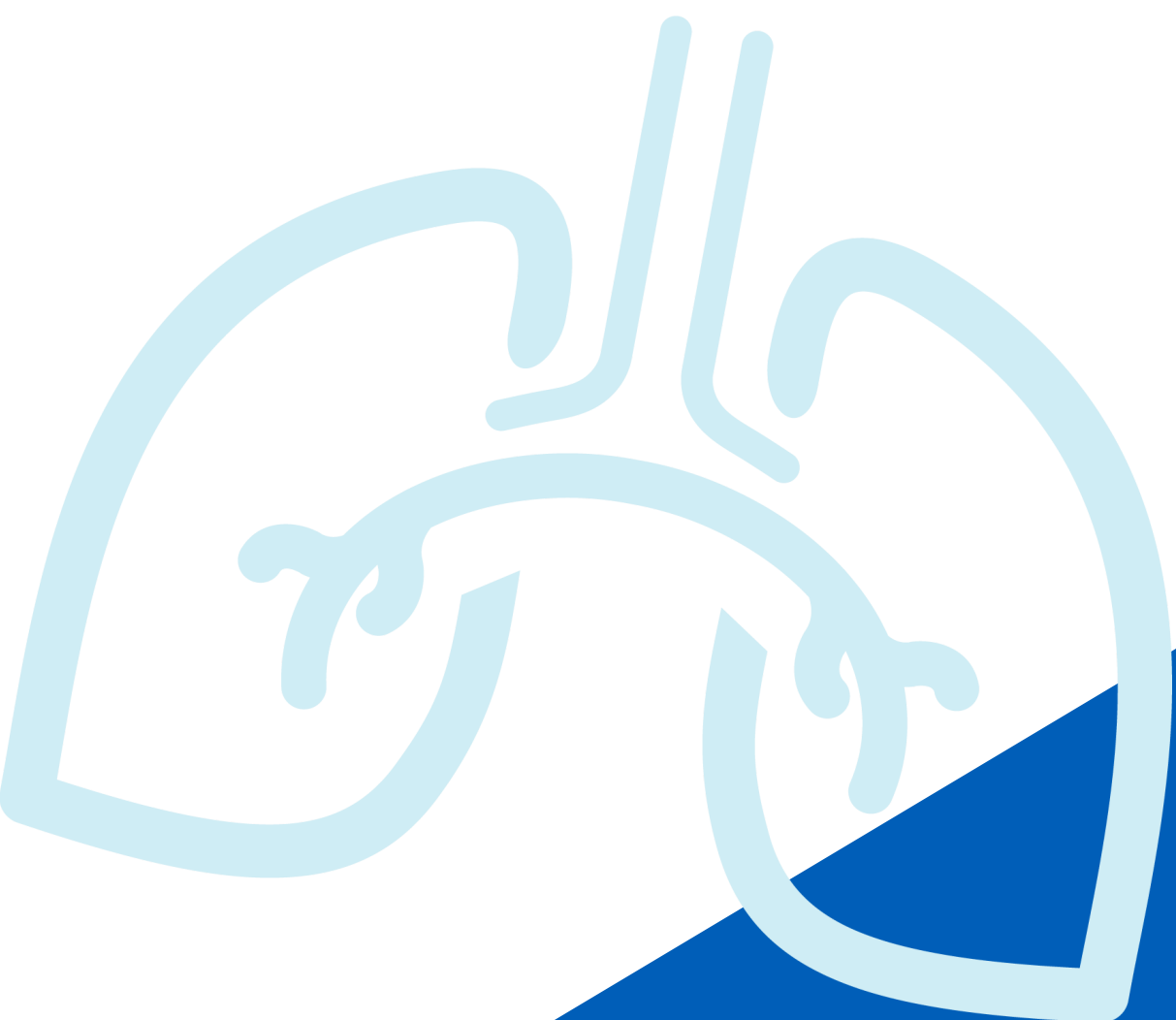
- Between 55 and 74 years old
- Currently smoke or have ever smoked
- Registered with a GP

You may have been or will be contacted by the NHS to discuss a lung health check appointment.

It's important that you attend.

To find out more:

www.southendlunghealthcheck.nhs.uk





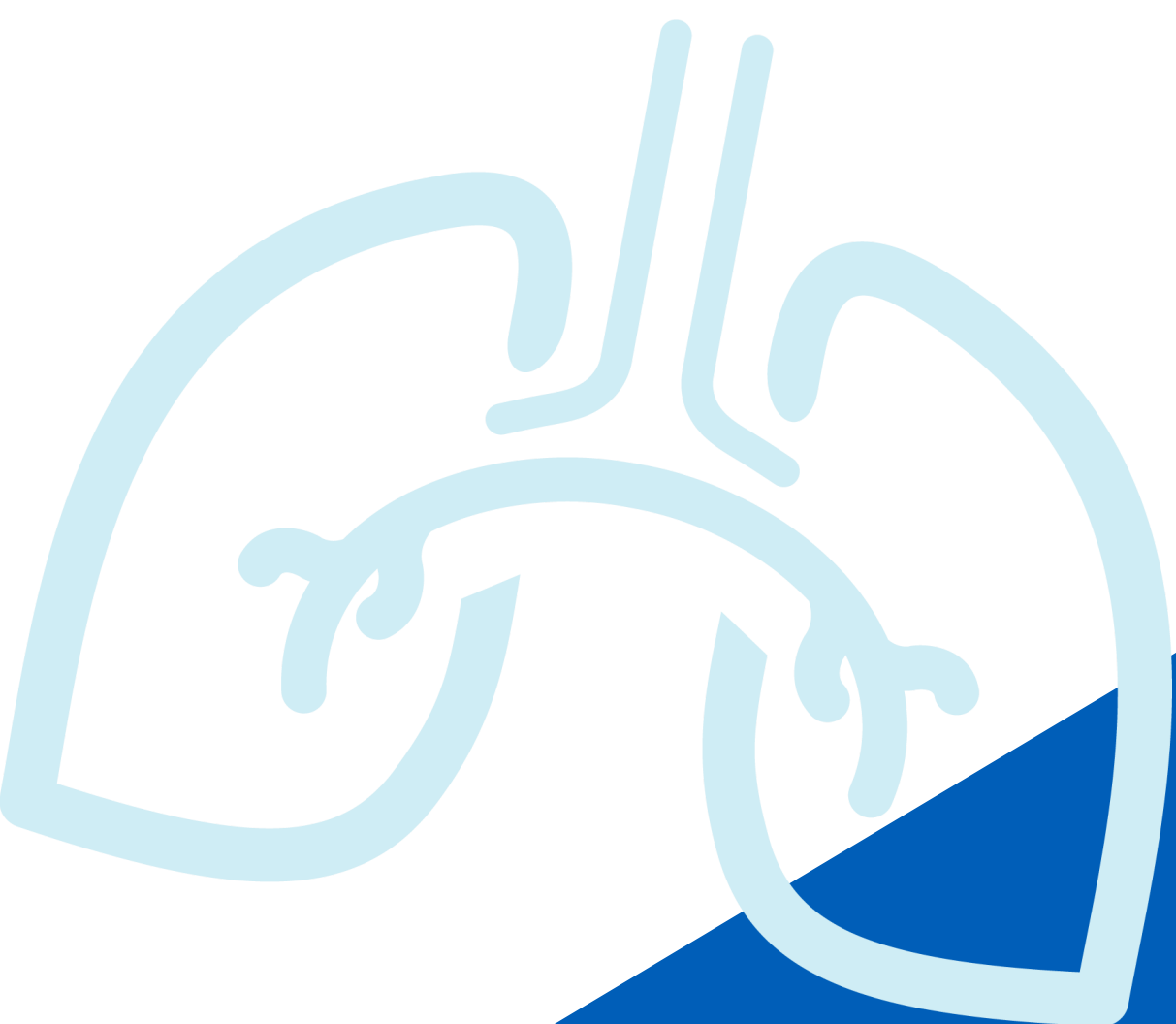
**Targeted Lung
Health Check
Programme**

NHS

Get an MOT for your lungs and give yourself some peace of mind.

The Targeted Lung Health Check Programme aims to provide people with an opportunity to catch any signs of lung conditions including cancer early on. Often the checks turn up clear, however, if the team do find anything concerning, it will be caught earlier, giving us more options for treatment and an improved outcome for patients.

Michael, 69, from Blackburn had his check and said, "The whole process was easy and straightforward and was an excellent way of obtaining what could be life-saving information. I would recommend anyone who is offered the Lung Health Check to take it... it gave me considerable peace of mind."



To find out more:

www.southendlunghealthcheck.nhs.uk